

Panasonic
BUSINESS

TOUGHBOOK A3
Solution Guide

TOUGHBOOK





TOUGHBOOK A3

FULLY RUGGED, FAN-LESS ANDROID™ 9.0 TABLET WITH 10.1” OUTDOOR DISPLAY

The 10.1” Android™-powered TOUGHBOOK A3 delivers true ruggedness and is ideal for highly mobile outdoor workers in challenging conditions. With its capacitive, sunlight viewable 10-finger multi-touch IPS display, flexible configurable ports and business expansion capability, this Android 9.0” device can be used in the field whilst benefitting from connectivity options to ensure data is always available when needed.

- Qualcomm Snapdragon 660 Octa-Core CPU
- Android™ 9.0 Pie
- Android Enterprise Recommended
- 10” WUXGA (1920x1200) outdoor
- Capacitive 10 finger multi-touchscreen
- 150cm drop resistant*
- Water and dust resistant (IP65)*
- Up to 15 hours battery life
- User field exchangeable battery
- Hot swap battery optional
- Dual battery design (Extended battery available)
- User field exchangeable battery
- USB 3.0 Type-C and USB 2.0 Type A
- Flexible configuration port (BCR/SCR/USB)**
- Lightweight - weighs approx. 880g

*Tested at Panasonic Factory

**Optional

All technical specifications are subject to change without notice.

TOUGHBOOK A3 ACCESSORY ECOSYSTEM



All accessories in this guide are fully tested and certified in the Toughbook factory by Toughbook engineers

Panasonic COMPASS covers everything you need to deploy and manage your Panasonic rugged Android tablets and handhelds securely in your business, over their lifetime. Look out for the logo next to the software and services that fall under the COMPASS umbrella in this catalogue.

Visit business.panasonic.co.uk/computer-product/COMPASS to find out more.



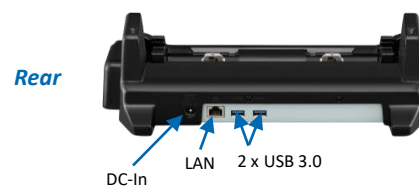
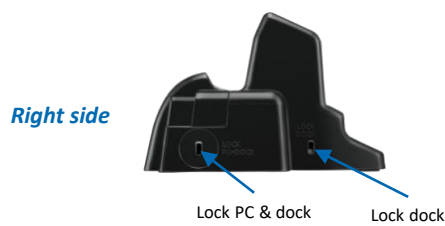
DOCKING SOLUTIONS

TOUGHBOOK A3 Desktop Port Replicator

Size: 315mm x 270mm x 50mm (12.4 x 10.7 x 1.97")

Weight: 1.6 kg (3.53 lb)

Part No: FZ-VEBA21U



TOUGHBOOK A3 Vehicle Dock

Dock will accommodate hand straps and extended batteries.

Ports:

- 16V DC-In
- LAN
- 2 x USB 2.0
- Optional dual antenna pass-through

Size: TBC

Weight: TBC

Part Nos: TBC



AVAILABLE: August 2020

All technical specifications are subject to change without notice.

CARRYING SOLUTIONS

Panasonic A3 Shoulder Strap

Part No: CF-VNS331U



Panasonic A3 Rotating Hand Strap with Stand

Part No: FZ-VSTA31U



A3 Mobility Bundle

Comes with removable handle and ergonomic shoulder strap.

Part No: PCPE-INF20B1



A3 Enhanced Rotating Hand Strap

Comes with a removable handle and 140cm long shoulder strap.

Part no: PCPE:INF20H1



A3 Always On Case

Part No: TBC



User Harness

Can be used with the Always On Case and the Enhanced Rotating Hand Strap.

Part No: PCPE-INFUVA1



All technical specifications are subject to change without notice.

POWER MANAGEMENT SOLUTIONS

Standard Battery Pack

3200 mAh

Part No: **FZ-VZSUT10U**



Extended Battery Pack

5580 mAh

Part No: **FZ-VZSUT11U**



AC Power Supply

Part no: **CF-AA6413Ax***

*E: UK; G: EU; T: Italy; D: Switzerland



5-Bay Battery Charger

Size: 152 x 89 x 60 mm

Weight: 0.44 kg

AC adaptor included (CF-AA5713A*)

Part No: **FZ-VCBT131***

*E: UK; G: EU; T: Italy; D: Switzerland



Auto Adaptor (90W, 12-32 VDC)

Part Nos:

- **CF-LND8024FD**: Cigarette plug input cable
- **CF-LND8024BW**: Bare wire input cable



Auto Adaptor (90W, 12-16 VDC)

Part Nos:

- **CF-LND80S-FD**: cigarette plug input cable
- **CF-LND80SBW**: bare wire input cable



MIL SPEC Auto Adaptor (90W, 11-32 VDC)

Part No: **CF-LNDMLSTD**



Auto Adaptor For Forklifts

Part Nos:

- **PCPE-LNDFH11**: 70-110V
- **PCPE-LNDFH32**: 12-32V
- **PCPE-LNDFH60**: 20-60VDC



All technical specifications are subject to change without notice.

PRODUCTIVITY SOLUTIONS

Capacitive Stylus Pen

IP55 rated.

Part No: **CF-VNP025U**



Bungee Tether

Part No: **CF-VNT002U**



Infocase Stylus Tether

Part No: **PCPE-INFUVA2**



Capacitive Touchscreen stylus

Part No: **PCPE-LDYST02**



USB Keyboard

US English only

Part No: **PCPE-KEYB**



Mini Antibacterial USB Keyboard

Part Nos:

- **PCPE-ACCABK1** – UK English;
- **PCPE-ACCABK2** – US English
- **PCPE-ACCABK3** – French
- **PCPE-ACCABK4** - German



Mini Rugged Wireless Keyboard

With Bluetooth

Part Nos:

- **PCPE-ACDSUK1** – UK English
- **PCPE-ACDSFR1** - French
- **PCPE-ACDSGR1** - German



Rugged USB Keyboard

Part No: **PCPE-MMRK01***

*E: English; F: French; G: German



All technical specifications are subject to change without notice.

CONNECTIVITY SOLUTIONS



Ruggedised LTE, WIFI and GPS router with cloud management

Part Nos:

- **PCPE-CRD96B1** - IBR900-600M router with 1yr cloud management bundle
- **PCPE-CRD96B3** - IBR900-600M router with 3yr cloud management bundle
- **PCPE-CRD96B5** - IBR900-600M router with 5yr cloud management bundle
- **PCPE-CRD96F1** - IBR900-600M router with 1yr cloud management bundle and vehicle antenna
- **PCPE-CRD96F3** - IBR900-600M router with 3yr cloud management bundle and vehicle antenna
- **PCPE-CRD96F5** - IBR900-600M router with 5yr cloud management bundle and vehicle antenna



Semi-rugged cloud managed LTE router

Part Nos:

- **PCPE-CRD6001** - IBR600C Wi-Fi router with 3-year NetCloud Essentials support
- **PCPE-CRD6002** - IBR600C Wi-Fi router with 5-year NetCloud Essentials support
- **PCPE-CRD6003** - IBR600C Wi-Fi router with 3-year NetCloud Essentials Prime support
- **PCPE-CRD6004** - IBR600C Wi-Fi router with 5-year NetCloud Essentials Prime support
- **PCPE-CRD6005** - Cradlepoint 9 wire GPIO cable. Adds 4 GPIO, 2nd ignition sense, redundant power

OTHER

Kensington Lock

Part No: PCPE-KENLOK1



LCD Screen Cleaning Cloth

Part No: CF-VNC001W

*MOQ: 10 pcs



Protective LCD Film

Replacement for protective film pre-installed on TOUGHBOOK A3

Part No: TBC



Rugged Bluetooth Barcode Scanner

IP 54 rating.

Part Nos:

- **PCPE-SMSD730** – Grey 1D barcode scanner
- **PCPE-SMSD750** - Grey 1D & 2D barcode scanner



All technical specifications are subject to change without notice.

MOBILE PRINT / SCAN SOLUTIONS



MW Series A7 Lightweight Printers

The extremely small and lightweight MW printers are easy-to-operate mobile printing solutions for printing A7 documents. Works with a range of printing materials, including a 2-ply carbon copy paper, ideal for receipt and ticket printing.

Part Nos.:

PCPE-BRP145B MW-145BT A7 Mobile Printer (USB & Bluetooth)



PJ7 Series A4 Mobile Printers

Perfectly dimensioned for your briefcase or computer bag, PJ7 series of compact, direct thermal printers can also be easily mounted in your vehicle. Take it out on the road and make sure your clients and customers receive those all-important documents in an instant. Available with 300 dpi print resolution, and with USB, Bluetooth or Wi-Fi.

Part Nos.:

- **PCPE-BRPJ762** PJ762 A4 mobile printer, 200dpi with USB & Bluetooth
- **PCPE-BRPJ763** PJ763 A4 mobile printer, 300dpi with USB & Bluetooth

RJ Series Rugged Mobile Printers

The RJ "Rugged Jet" series portable printers are ideal on-person devices for mobile workers needing to print labels and receipts on the go.



RJ2000 Series

- **PCPE-BRP2030** RJ2030 2" ticket/receipt printer (USB & Bluetooth)
- **PCPE-BRP2050** RJ2050 2" ticket/receipt printer (USB, Bluetooth & Wi-Fi)
- **PCPE-BRP2140** RJ2140 2" ticket and label printer (USB & Wi-Fi)
- **PCPE-BRP2150** RJ2150 2" ticket and label printer (USB, Bluetooth & Wi-Fi)



RJ3000 series

- **PCPE-BRP3050** RJ3050 3" Mobile Receipt Printer (USB, serial, Bluetooth & Wi-Fi)
- **PCPE-BRP3150** RJ3150 3" Mobile Receipt & Label Printer (USB, serial, Bluetooth and Wi-Fi)



RJ4000 series

- **PCPE-BRPRJ30** RJ4030 4" Mobile Printer (USB, serial & Bluetooth)
- **PCPE-BRPRJ40** RJ4040 4" Mobile Printer (USB, serial & Wi-Fi)

All technical specifications are subject to change without notice.

PROFESSIONAL SERVICES



Android Installation

Part No: **PCPE-PSANDRD**

Price on Request

Custom ROM Creation

Price and SKU on Request.

SIM Installation

Part No: **PCPE-PSSIMIN**

Asset Tagging

Standard, using CPE label set.

Part No: **PCPE-PSATAG1**

Information Management Bundle

IMEI, MAC, SIM, ASSET, Hardware Hash reporting.

Part No: **PCPE-PSATAGB**

Solution Packaging

Up to 10 items packaged together in a box.

Does not include custom designed case.

Part No: **PCPE-PSSPACK**

Customer Branding

Logo badge on device casing or bezel.

Part Nos: **PCPE-PSLOGOB**

Customised Deployment / Logistics

Part No: **PCPE-PSCDL01**

Price on Request.

Bespoke Training Material

Part No: **PCPE-PSBTM01**

Price on Request

All technical specifications are subject to change without notice.

LIFECYCLE SUPPORT



Extended Warranty (4 or 5 years)

Panasonic’s Extended Warranty provides an additional two years of warranty, helping you to minimise repair costs and maximise the life cycle of your TOUGHBOOK or Toughpad.

Part No.: FZ-LESPEW* *4 / 5

Accidental Damage (3, 4 or 5 years)

Panasonic’s Accidental Damage Warranty provides protection against any eventuality out in the field for up to 5 years, providing you and your workforce with complete peace of mind.

Part No.: FZ-LESPAD* *3 / 4 / 5 (4 & 5 year options include Extended Warranty)

COMPASS Complete (3, 4 or 5 years)

Panasonic’s Accidental Damage Warranty provides protection against any eventuality out in the field for up to 5 years, providing you and your workforce with complete peace of mind.

Part No.: TBC *3 / 4 / 5

Docking Station Warranties (3, 4, or 5 years)

Extended Warranty:

CF-LESPPD*	*3 / 4 / 5	Panasonic Dock – 3, 4 or 5 years Extended Warranty
CF-LESPND*	*3 / 4 / 5	3rd Party Dock – 3, 4 or 5 years Extended Warranty

Accidental Damage:

CDS-LESPAD*	*3 / 4 / 5	Panasonic Dock – 3, 4 or 5 years Accidental Damage Warranty
CDS-LESPTAD*	*3 / 4 / 5	3rd Party Dock – 3, 4 or 5 years Accidental Damage Warranty

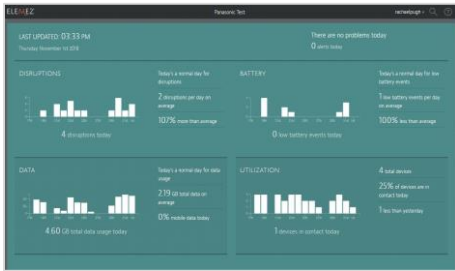
Smart Battery Warranty

Smart Battery Monitor software, powered by B2M Solutions, monitors device battery health in real-time. Smart Battery Monitor will alert you when batteries deployed in the field reach low capacity during normal use, so a replacement battery can be sent out in advance. Available at point of sale of device only.

Part No.: **CF-LESPBASS3** 3 year Smart Battery Warranty (longer periods available on request)

All technical specifications are subject to change without notice.

SMART SOLUTIONS

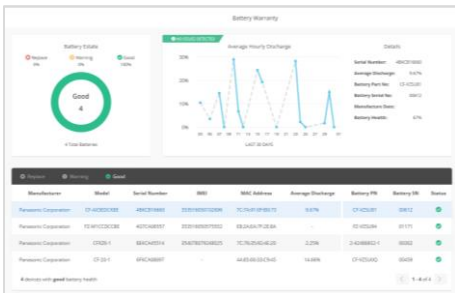


TOUGHBOOK Smart Service

Real time analytics, powered by B2M Solutions, showing the health and performance of your estate of mobile devices, focussing on areas such as battery life, data usage, disruptions and connectivity. Enables the user to recognise patterns of usage and potentially pre-empt issues before they arise.

Part Nos.:

- **CF-LESPSSM3** 3 year Smart Service self-managed licence
- **CF-LESPSSM5** 5 year Smart Service self-managed licence

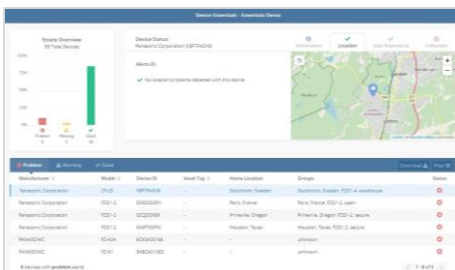


Smart Battery Monitor

An additional “Smart” module that monitors battery usage and health in detail, focusing on battery serial numbers, the software allows the customer to track, identify and replace batteries before they impact productivity. With dashboard access and alerts.

Part Nos.:

- **CF-LESPBAEE1** 1 year Smart Battery Monitor software licence
- **CF-LESPBAEE3** 3 year Smart Battery Monitor software licence
- **CF-LESPBAEE5** 5 year Smart Battery Monitor software licence



Smart Device Monitor

An additional “Smart” module that monitors device usage in more detail. Dashboard access provides information such as device location; user experience, including drop detection on Android devices and also enables alerts and geofences to be set up.

Part Nos.:

- **CF-LESPDAEE1** 1 year Smart Device Monitor software licence
- **CF-LESPDAEE3** 3 year Smart Device Monitor software licence
- **CF-LESPDAEE5** 5 year Smart Device Monitor software licence

All technical specifications are subject to change without notice.

SOFTWARE SOLUTIONS – PREMIER PARTNERS



Absolute Data and Device Security

Patented technology to centrally secure TOUGHBOOK or Toughpad devices for unrivalled endpoint security and data risk management.

Part Nos:

- | | | |
|--------------------------|----------------------------|----------------------|
| • PCPE-ABSVIS* 1/2/3/4/6 | Absolute Visibility | 1/2/3/4/5 yrs |
| • PCPE-ABSDPR* 1/2/3/4/6 | Absolute Control | 1/2/3/4/5 yrs |
| • PCPE-ABSDPM* 1/2/3/4/6 | Absolute Resilience | 1/2/3/4/5 yrs |

Website: <https://www.absolute.com/partners/oem/panasonic/>



NetMotion Mobility

More than just a VPN, “Mobility” Mobile Performance Management software can dynamically maintain access to applications through changing network conditions, allowing mobile workers to remain productive anywhere their work takes them. Diagnostics option also available.

Part Nos:

- PCPE-NLW 1/3/5*** Mobility and Diagnostics (plus 1, 3 or 5 years maintenance/support)
- PCPE-NMW 1/3/5*** Mobility only (plus 1, 3 or 5 years maintenance/support)

Website: <https://www.netmotionsoftware.com/products/mobility>



SOTI MobiControl

MobiControl is an Enterprise Mobility Management (EMM) solution with enhanced EMM features like application management, content management, location services and remote help (Key USP).

Part Nos:

- PCPE-SOTCL** 1/2/3/5 U/E Cloud license & hosting (1, 2, 3 or 5 yrs / UK or EU)

Website: <https://www.soti.net/products/soti-mobicontrol/>



Sygic

Sygic Professional GPS Navigation works offline and features truck specific routing, itinerary with time windows and over 60 APIs for development with Android and Windows based apps.

Part numbers available upon request.

Website: <https://www.sygic.com/enterprise/professional-gps-navigation-sdk>

For more info on these software solutions, please refer to the co-branded data sheet [here](#).

SOFTWARE SOLUTIONS – CERTIFIED PARTNERS



Staylinked

StayLinked's SmartTE software provides a cost-effective way to take advantage of touchscreen devices with Terminal Emulation by transforming traditional "green screen" application screens into easy-to-use, graphical screens with no changes to the underlying enterprise applications.

For more information or to request a demo visit:

<https://www.staylinked.com/panasonic>



Loqus

Loqus Fleet Ltd specialises in the provision of end-to-end Transport management systems providing organisations with the necessary tools to help them Plan, Execute and Monitor & Control work orders from initial order taking down to the last mile. Headquartered in Malta, the group employs a passionate team of high calibre software engineers supported by an experienced management team

Visit website: <http://openfleet.loqusgroup.com/>



Acronis

Acronis sets the standard for cyber protection and hybrid cloud storage through its innovative backup, anti-ransomware, disaster recovery, storage, and enterprise file sync and share solutions. Enhanced by its award-winning AI-based active protection technology, blockchain-based authentication and unique hybrid-cloud architecture, Acronis protects all data in any environment – including physical, virtual, cloud, mobile workloads and applications – all at a low and predictable cost.

Visit website: <https://www.acronis.com>



GPC Systems

GPC is an award-winning software house with over 25 years of experience working with a range of sectors across the globe. Driven by the needs of their customers in healthcare, transportation, police, logistics and local government, GPC strives to improve outcomes through the most efficient use of resources. GPC has in-depth experience creating solutions utilising 3D cameras, including the Intel® RealSense™ technology integrated into the TOUGHBOOK M1.

Visit website: <https://www.gpcsl.com/>

All technical specifications are subject to change without notice.

ACCESSORY SUMMARY 1

Solution Type	Part Number	Description
Docking Solutions	FZ-VEBA21U	TOUGHBOOK A3 Desktop Port Replicator
	TBA	TOUGHBOOK A3 Vehicle Dock
Carrying Solutions	CF-VNS331U	TOUGHBOOK A3 Shoulder Strap
	FZ-VSTA31U	TOUGHBOOK A3 Rotating Hand Strap with Stand
	PCPE-INF20B1	Toughmate A3 Mobility Bundle
	PCPE:INF20H1	Toughmate A3 Enhanced Rotating Hand Strap
	TBA	Toughmate A3 Always On Case
	PCPE-INFUVA1	User Harness
Power Management	FZ-VZSUT10U	Standard Battery Pack
	FZ-VZSUT11U	Extended Battery Pack
	CF-AA6413A*	AC Power Supply
	FZ-VCBT131*	5-Bay Battery Charger
	CF-LND80S-FD/BW	Car Charger (12-16VDC)
	CF-LND8024 FD/BW	Car Charger (12-32VDC)
	CF-LNDMLSTD	Mil Spec Auto Adaptor
	PCPE-LNDFH11	Car Charger for Forklifts (70-110V)
	PCPE-LNDFH32	Car Charger for Forklifts (12-32V)
PCPE-LNDFH60	Car Charger for Forklifts (20-60VDC)	
Styluses & Tethers	CF-VNPO25U	Panasonic Capacitive Stylus Pen
	CF-VNT002U	Bungee Tether
	PCPE-LDYST02	Capacitive Touchscreen Stylus
	PCPE-INFUVA2	Stylus Tether
Keyboards and peripherals	PCPE-ACDS*	Mini Rugged Wireless Keyboard
	PCPE-MMRK01*	Rugged USB Keyboard
	PCPE-KEYB	USB Keyboard
	PCPE-ACCABK*	Mini Antibacterial USB Keyboard
	PCPE-SMSD730	Grey 1D barcode scanner
	PCPE-SMSD750	Grey 1D & 2D barcode scanner
Connectivity	PCPE-CRD96B*	Router with cloud management bundle
	PCPE-CRD96F*	Router with cloud management bundle and 5-in-1 vehicle antenna
	PCPE-CRD600*	Semi-rugged cloud managed LTE router with NetCloud Essentials or Essential Prime support
Security & Protection	CF-VN001W	LCD Screen Cleaning Cloth
	CF-VPF31U	LCD Protective Film for TOUGHBOOK A3
	PCPE-KENLOK1	Kensington Lock

All technical specifications are subject to change without notice.

ACCESSORY SUMMARY 2

Solution Type	Part Number	Description
Printers	PCPE-BRP145B	MW-145BT A7 Mobile Printer (USB & Bluetooth)
	PCPE-BRPJ762	PJ762 A4 mobile printer, 200dpi with USB & Bluetooth
	PCPE-BRPJ763	PJ763 A4 mobile printer, 300dpi with USB & Bluetooth
	PCPE-BRP2030/50	RJ2030 / RJ2050 2" ticket/receipt printer
	PCPE-BRP2140/50	RJ2140 / RJ2150 2" ticket and label printer
	PCPE-BRP3050	RJ3050 3" Mobile Receipt Printer (USB, serial, Bluetooth & Wi-Fi)
	PCPE-BRP3150	RJ3150 3" Mobile Receipt & Label Printer (USB, serial, Bluetooth and Wi-Fi)
	PCPE-BRPRJ30/40	RJ4030 / RJ4040 4" Mobile Printer
Professional Services	PCPE-PSANDRD	Android Installation
	On Request	Custom ROM Creation
	PCPE-PSSIMIN	SIM Installation
	PCPE-PSATAG1	Asset Tagging
	PCPE-PSATAGB	Information Management Bundle
	PCPE-PSLOGOB	Customer Branding
	PCPE-PSATAG1	Solution Packaging
	PCPE-PSCDL01	Customised Deployment / Logistics
Lifecycle support solutions	PCPE-PSBTM01	Bespoke Training Material
	FZ-LESPEW 4/5	Extended Warranty (4 or 5 Years)
	FZ-LESPAD 3/4/5	Accidental Damage (3, 4 or 5 years)
	CF-LESPPD 3/5	Extended Warranty for Panasonic Dock (3 or 5 years)
	CF-LESPND 3/5	Extended Warranty for Third Party Dock (3 or 5 years)
	CDS-LESPAD 3/4/5	Accidental Damage Warranty for Panasonic Dock (3, 4 or 5 years)
	CDS-LESPTAD 3/4/5	Accidental Damage Warranty for 3rd Party Dock (3, 4 or 5 years)
Smart Solutions	CF-LESPBASS3	Smart Battery Warranty – 3 years only
	CF-LESPSSSM3/5	Smart Service licence – 3 or 5 years
	CF-LESPBAEE1/3/5	Smart Battery Monitor software licence
	CF-LESPDAEE1/3/5	Smart Device Monitor software licence

All technical specifications are subject to change without notice.



ACCESSORY SUMMARY 3

Solution Type	Part Number	Description
Software Solutions	PCPE-ABSDPM* 1/2/3/4/6	Absolute Resilience
	PCPE-ABSDPR* 1/2/3/4/6	Absolute Control
	PCPE-ABSVIS* 1/2/3/4/6	Absolute Visibility
	PCPE-NMW 1/3/5*** PCPE-NLW 1/3/5***	NetMotion Mobility & Diagnostics software and support
	PCPE-SOTMC 1/2/3/5 U/E	Subscription & Maintenance (1, 2, 3 or 5 yrs; U: UK/E: EU)
	PCPE-SOTCL 1/2/3/5 U/E	Cloud License & hosting (1, 2, 3 or 5 yrs; U: UK/E: EU)

All technical specifications are subject to change without notice.